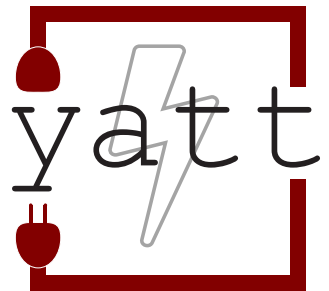


YET ANOTHER TEST TOOL

Charge Stations

Quality assurance tool for charging stations



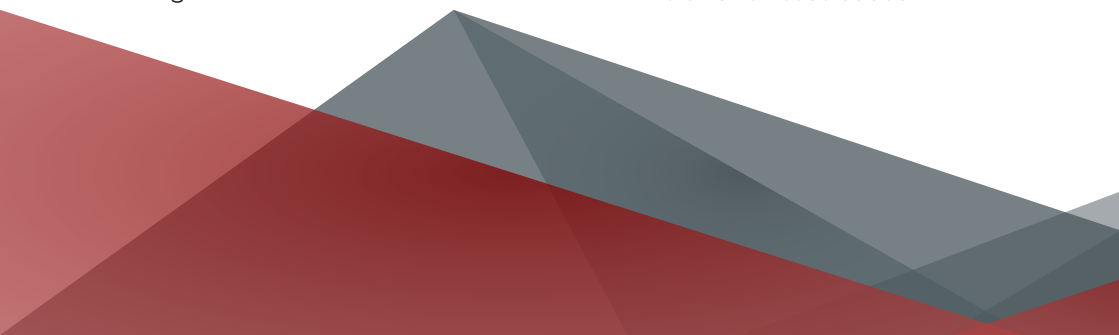


THE Product

Quality assurance is a constant companion of every product development. Done well, it gives manufacturers the assurance of delivering high-quality products to their customers. yet another test tool enables the manufacturers of charging infrastructure to ensure their quality automatically and in the current protocol versions in accordance with the specifications of the Open Charge Alliance (OCA). Documentation of results will be based on test evaluations. For this purpose, OCPP messages can be logged and used to generate statistics and reports.

yatt tests charging infrastructure against versions 1.6 and 2.0.1 of the Open Charge Point Protocol (OCPP). The application handling is very intuitive. Necessary preconditions of test cases are automatically loaded and executed.

WHY Us?

- ✔ Simple and very intuitive control of the application
 - ✔ Creation of test cycles and test cases
 - ✔ Automated control and configuration of test cases
 - ✔ Extensive search and filter options for test cases
- 

A BRIEF Overview

During development of yatt, attention was paid to the highest usability possible. As a result, yatt enables fast and clear configuration, preparation, and execution. All test cases supported by the OCPP Compliance Test Tool are integrated. Colors and meaningful icons were chosen consciously to provide best user experience.

The screenshot displays the OCPP Test Tool interface, which is organized into several functional areas:

- Menu:** Located at the top left, it includes options for 'Test', 'Logs', and 'Settings'.
- Search + Filter of Testcases:** A sidebar on the left allows users to filter test cases based on criteria like 'Interactive', 'Has Charging Process', and 'Feature Profiles'. A 'Reset' button is provided for clearing filters.
- List of Testcases:** A central list shows various test cases, such as '[7001] - Cold Boot Charging Station - Reserved' and '[7002] - Reservation: Specific EVSE', each with a status indicator (checkmark or X).
- Test execution and overview:** The main workspace shows the execution of a test case (e.g., 'Heartbeat interval'). It includes a timeline with green bars for successful steps and red bars for failures. A detailed view of a failed step shows an error message: 'Heartbeat interval is not set to an interval of 10 seconds'. The interface also displays JSON payloads for sent and received messages.
- Details of a selected test:** A right-hand pane provides a detailed view of the selected test case, including its name and associated features.
- Additional Features:** On the far right, there are buttons for 'JIRA Synchronization' and 'Playbook'.

Figure 1: Overview of yatt

Parameter and results

CONFIGURABLE Tests

Tests are parameterizable. Dialogs for input of parameters will be displayed at the required interaction points.

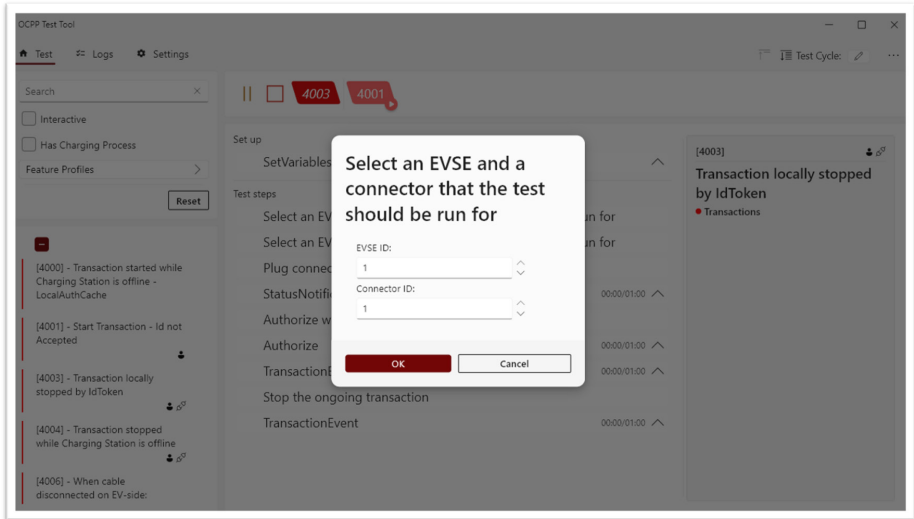


Figure 2: Input of EVSE and Connector ID

OVERVIEW Test Results

After the test has been finished, yatt displays a short overview of test results. Detailed information can be viewed in the log page of the tool.

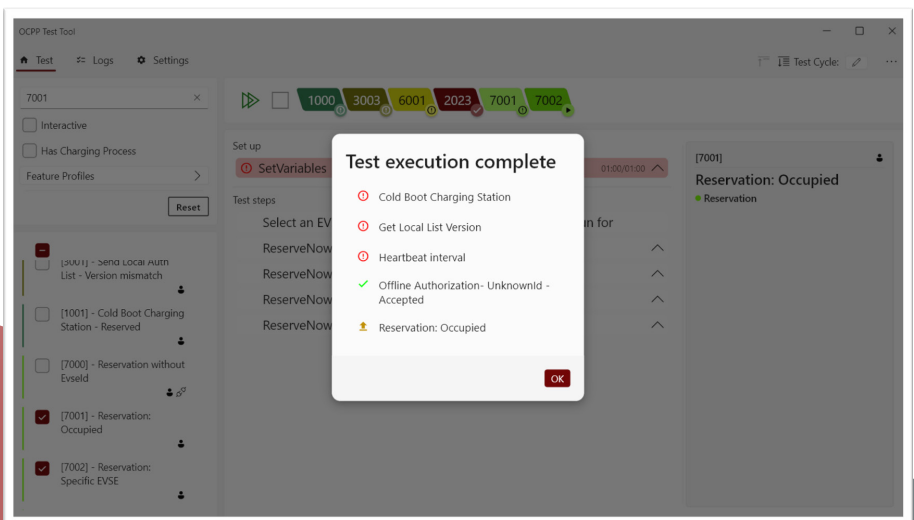


Figure 3: Display of test result after test execution

Log page and JIRA connector

OVERVIEW Logs

The results of a test execution can be displayed and filtered directly in the application. All result data can also be exported.

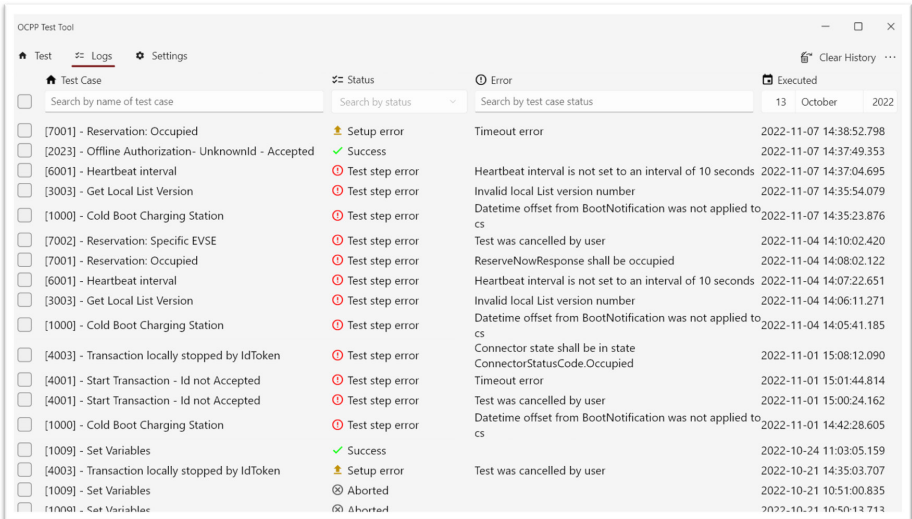


Figure 4: Display of detailed logs

CONNECTION JIRA

Test cycles and test cases can be synchronized with the integrated JIRA connector.

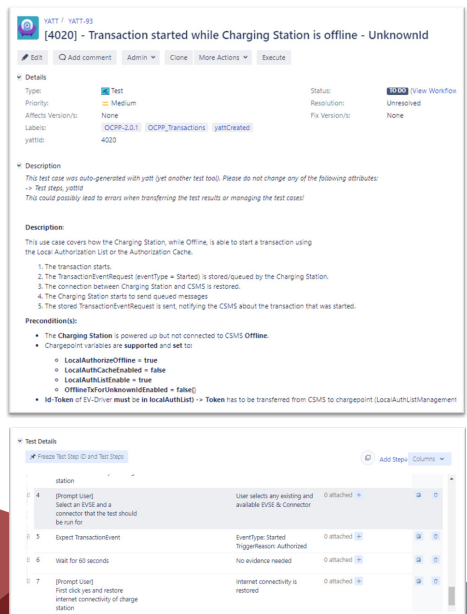
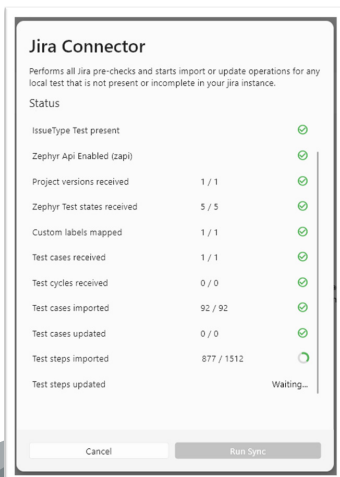


Figure 5: Synchronization with JIRA



OCPP 1.6 & OCPP 2.0.1

Support of OCA protocol versions 1.6 and 2.0.1 in one tool.

TEST CASE Execution

Automated execution of test cases for a purposeful, time-saving workflow.

DYNAMIC CONFIGURATION of Test Case Variables

Automated just-in-time input of test variables through dialog-based user input.

REAL-TIME Feedback

Real-time view of OCPP & error logs (including key data points such as message timeouts) with visual highlighting.

JIRA® (ZEPHYR & XRAY) Integration

Support of the test plugins Zephyr & Xray with complete synchronization of test cycles and test cases.

OVERVIEW Test Case

Intuitive and well-arranged display of message and test histories.

INTRINSIC DOCUMENTATION of Test Cases

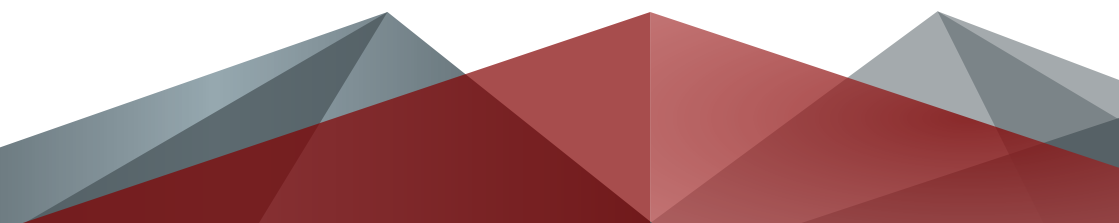
Extensive presentation of documentation of test cases as well as search and filter options according to various characteristics.

CREATION of Test Cycles

Definition of test cycles within the Jira environment and import into the test tool suite.

FILTERING of Test Cases

Extensive filter options with free text search for test cases, covering feature profiles, charging processes, user interactions and execution status.



OUR Features

	OCTT (1.6)	yatt
OCPP 1.6	■	■
OCPP 2.0.1		■
Overview Test Case	■	■
Test Case Execution	■	■
Configuration Menu	■	■
Creating Environment Profiles		■
View OCPP Messages	■	■
Export OCPP Messages	■	■
Real-Time Feedback		■
Dynamic Configuration of Test Case Variables		■
Creation of Test Cycles		■
Filtering of Test Cases		■
Intrinsic Documentation of Test Cases		■
JIRA® (Zephyr & Xray) Integration		■

JIRA® is a trademark of Atlassian Ltd.
Zephyr is a trademark of SmartBear Software Inc.
Xray is a trademark of Xblend



CEO

Dr. Timo Lühr

Phone: +49 (0)531 / 250 39 40

Email: Timo.Lühr@yasc.de

Account Manager

Marten Staudenraus

Phone: +49 (0)176 / 3638 29

Email: Marten.Staudenraus@yasc.de



Lead Developer

Sherwin Parvizian

Quality Assurance

Hinrich Wesche

